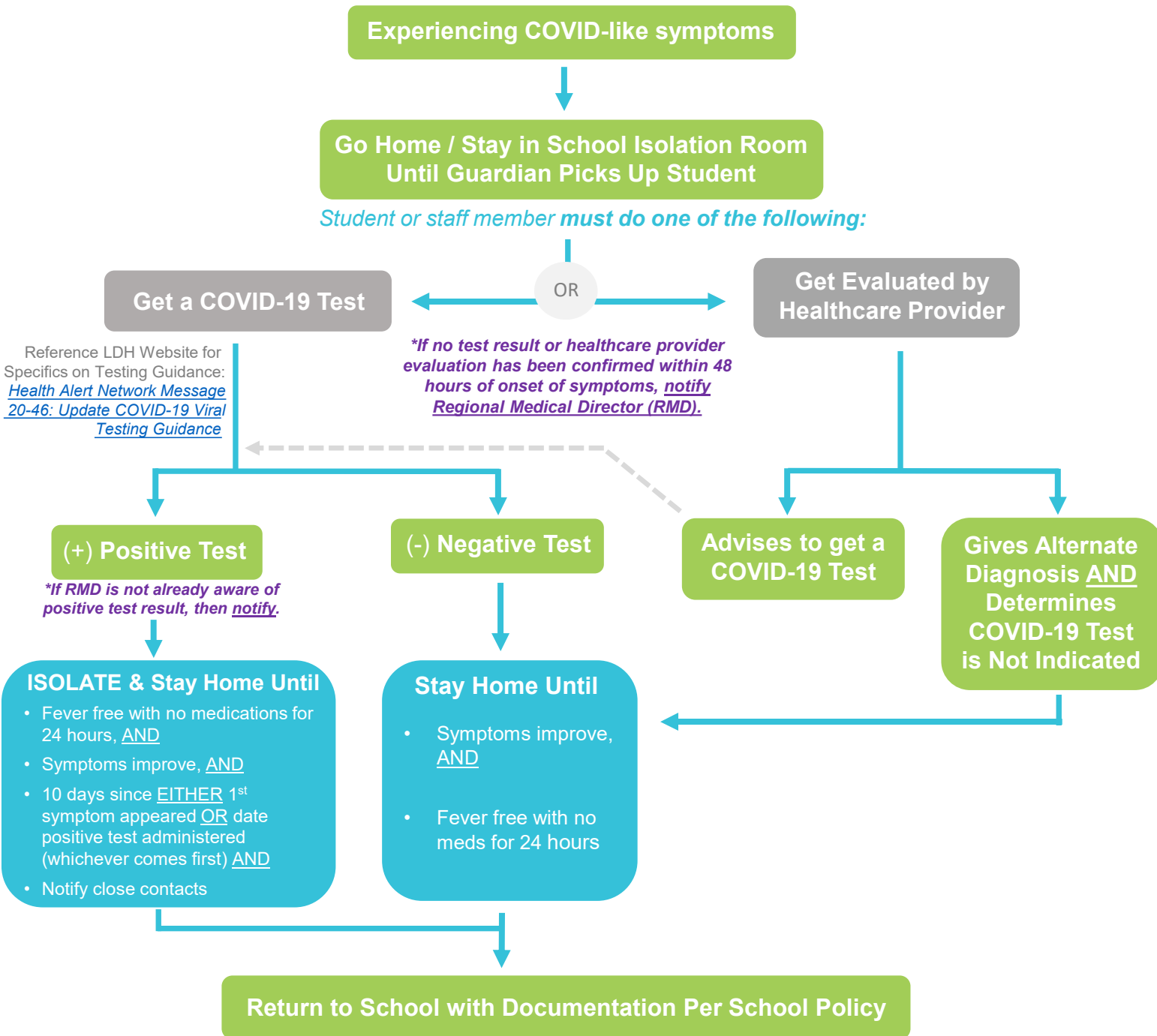


School COVID-19 Screening Decision Tree:

Responding to a Symptomatic Individual – 12.7.2020



Children's Hospital
New Orleans
LCMC Health



COVID-19 symptoms include but are not limited to:

- Fever ≥ 100.4 °F
- Shortness of breath
- Chest pain
- Increasingly nonproductive (dry) cough
- Body aches or fatigue
- GI symptoms (nausea, diarrhea)
- Loss of taste and/or smell
- Other flu or cold like symptoms such as headache, sore throat, or congestion

Reference LDH Website for Specifics on Suspect Cases & Contact Tracing: [COVID-19 Contact Tracing in Schools](#)

Children's Hospital New Orleans Hotline for School Wellness & Virtual Care →504.837.7760

Notification for close contact only needs to take place once a positive case is confirmed or if deemed necessary by RMD.

In case of an emergency, dial 911.

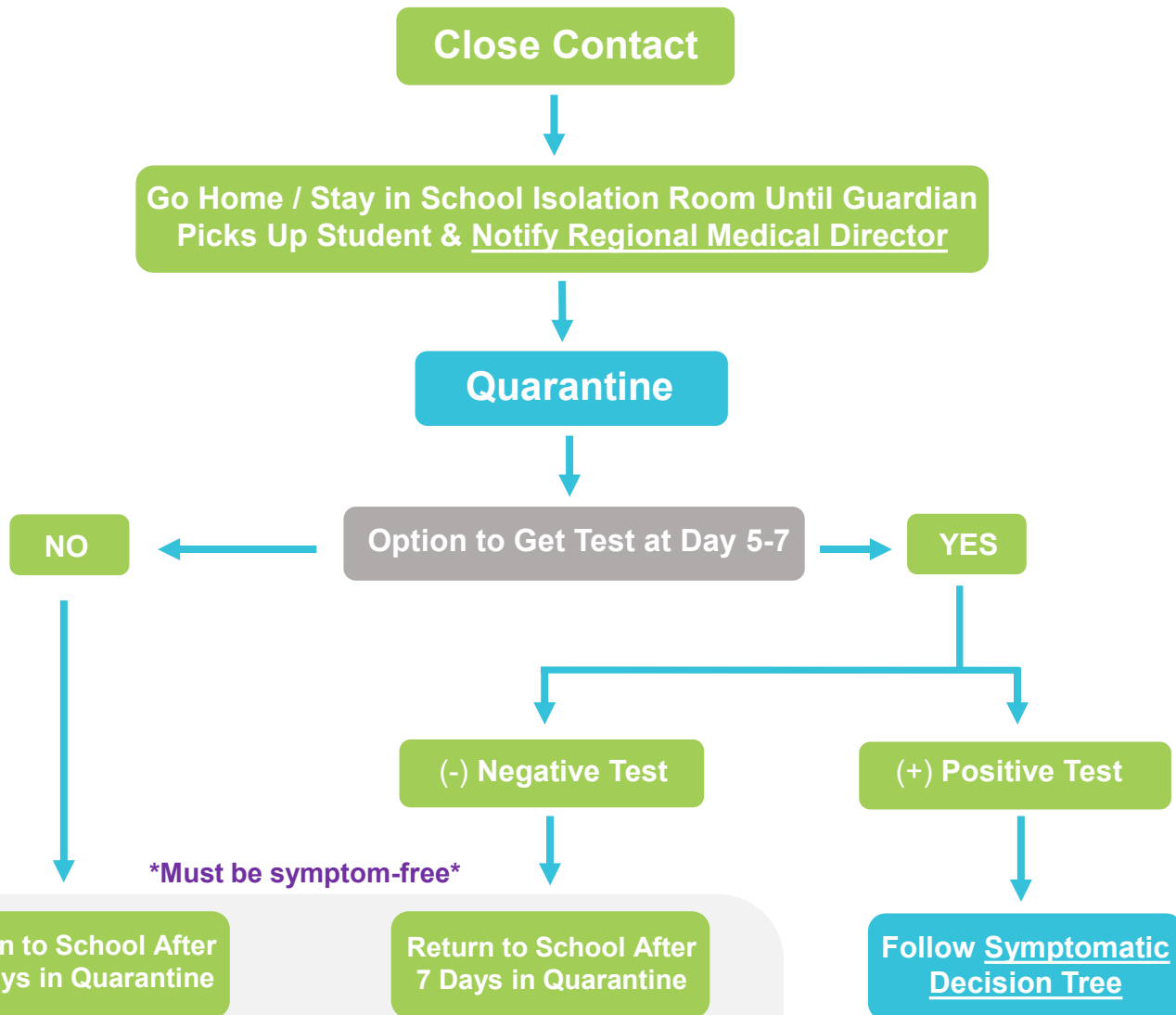
This chart follows the most up-to-date CDC & LDH recommendations. Download a copy at: <https://www.chnola.org/community/thrivekids-student-wellness/covid-19-support/school-covid-19-decision-tree/>

School COVID-19 Screening Decision Tree:

Responding to Close Contact – 12.7.2020



Children's Hospital
New Orleans
LCMC Health



Must be symptom-free

Return to School After 10 Days in Quarantine

Return to School After 7 Days in Quarantine

Follow Symptomatic Decision Tree

Reducing length of the quarantine period DOES NOT ELIMINATE THE RISK OF COVID-19. If any COVID-19 symptoms develop during the 14-day period after a close contact:

- Immediately self-isolate
- Follow Symptomatic Decision Tree
- Strongly recommended to get a COVID-19 test

Reference LDH Website for Form Titled: [Return-to-School Self-Certification for COVID-19](#)

CLOSE CONTACT =

- Within 6 feet of someone who tested positive, for a **cumulative total of 15 minutes or more over a 24-hour period**, regardless of whether either party was wearing a mask;
- Timing of exposure must have taken place within 2 days of the positive person's onset of symptoms or positive test result (whichever came first).

Reference LDH Website for Specifics on Suspect Cases & Contact Tracing: [COVID-19 Contact Tracing in Schools](#)

Children's Hospital New Orleans Hotline for School Wellness & Virtual Care → 504.837.7760

Notification for close contact only needs to take place once a positive case is confirmed or if deemed necessary by RMD.

In case of an emergency, dial 911.

This chart follows the most up-to-date CDC & LDH recommendations. Download a copy at: <https://www.chnola.org/community/thrivekids-student-wellness/covid-19-support/school-covid-19-decision-tree/>